

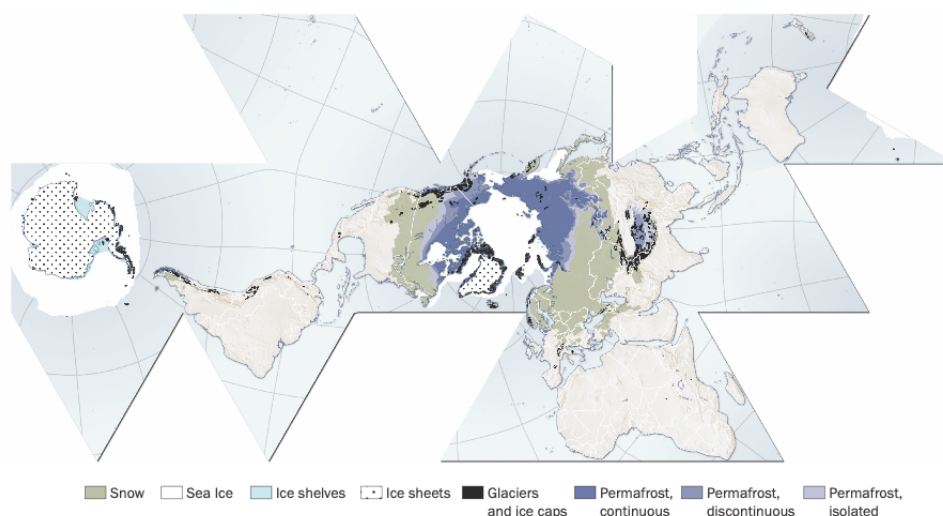
Powerful Geography 1

CHAPTER 2 - THE CRYOSPHERE

Activity - Create a globe showing the location of the Cryosphere.

(Activity adapted from EarthLabs <https://serc.carleton.edu/eslabs/cryosphere/1a.html>)

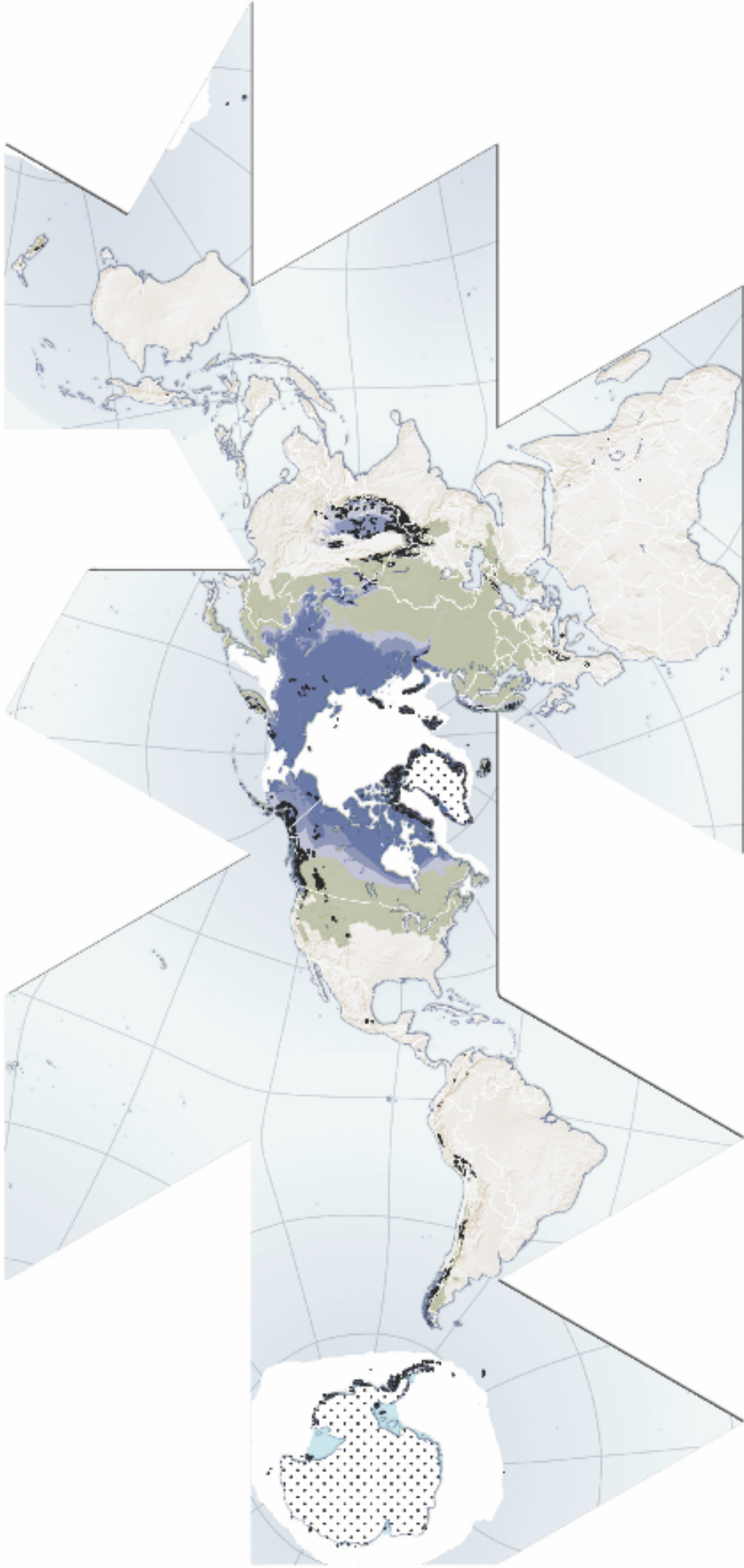
1. Use an A3 size printed map. Cut out the map along its edges. Tape the edges together to form a "globe."
2. Rotate your globe so the north pole is on top. Use an Atlas / Digital map to name Antarctica, Greenland, Canada and Russia on your map.
3. Use the map legend to locate each of the different components of the cryosphere (snow, sea ice, glaciers, etc.).
4. Describe the spatial distribution of different components of the cryosphere.



Powerful Geography 1, Geography Teachers Association NSW & ACT (Figure 2.1.2)
Map source Hugo Ahlenius, UNEP/GRID-Arendal Maps and Graphics Library, Cryosphere

Powerful Geography 1

Print this page on A3 paper.



- Snow
- Sea Ice
- Ice shelves
- Ice sheets
- Glaciers and ice caps
- Permafrost, continuous
- Permafrost, discontinuous
- Permafrost, isolated

